



Amsterdam
Declarations
Partnership



European
National Soya
Initiatives



Collaborative
Soya
Initiative

What's next? The EU Regulation requirements
and making impact with sustainable soy.

Expert meeting CSI with Amsterdam Declaration Partnership and ENSI-
European National Soya Initiatives, October 27th, 2022

Agenda 14:30-16:00 CET



14:30-14:35 **Welcome and opening:** Heleen van den Hombergh, coordinator CSI

14:35-14:40 **Welcome by ENSI:** Tijmen de Vries, Secretariat ENSI

14:40- 14:55 **State of affairs EU Regulation:** Julius Seinen (Netherlands government), Peter de Koning (Secretariat ADP)



14:55-15:20 **Reflections on the way forward by some key stakeholders:** Will Schreiber (Retail Soy Group), Nathalie Lecoq (Fediol/Coceral/Fefac), Lucie Smit (Soft Commodities Forum), Gert van der Bijl (Solidaridad)


15:20- 16:00 Reactions by other experts and dialogue with all

→ **Concerns and ideas regarding effective implementation of EU Regulation irt soy.**

→ **From influence to impact: what is role of multi stakeholder collaborations on soy such as National Soy Initiatives, others?**

Save the date: 2nd meeting after new year, when text of EU Regulation is ready. February 2 (tbc).

- 
- Thanks for having camera on, mike off, and lifting hand sign for questions and remarks.
 - Do use chat.... but let us avoid parallel dialogue and info exchange that distracts from plenary?
 - Welcome to the conversation!
- 



Vision of the Collaborative Soy Initiative :
100 % conversion free sustainable soy production
and uptake
on a global scale

Mission: to inform, create synergies and add
value with activities where useful.

For example: info webinars, meta meetings
between soy initiatives → collective narrative:

Combine multiple tools for impact.



Bird's eye view over added values of multiple routes: please read the narrative!

- A. Robust certification schemes** set and control environmental and social criteria, including and beyond conversion
- B. Biome wide moratorium** esp if strong verification mechanism: one clear requirement and landscape wide effect
- C. Clean suppliers approach...** create volume of conversion-free, and avoid leakage to other biomes and markets
- D. Landscape initiatives** engage producers at all levels, government and promote additional conservation

- E. *Pre-competitive initiatives*:** compatible asks, scale in volume and... resources, combine tools from A-D
- F. *Carbon footprint framework*:** beyond LCA: make carbon important factor in policies. Combine tools from A-D.



Collaborative
Soy
Initiative

proforest

Example One of a combined solution



Example Two of a combined solution



- ❖ Robust Certification Scheme
- ❖ Biome-wide Moratorium
- ❖ Clean Supplier Approach
- ❖ Landscape/Jurisdictional Initiatives



Is the EU Regulation a « superman » law to replace all other tools, or an element in a larger picture? Redefining roles in coming times.

A. Robust certification schemes set and control environmental and social criteria including and beyond conversion

B. Bio
clear re

C. Clea
avoid le

D. Land
promo

E. Pre-
resourc

F. Carbon footprint framework: beyond LCA: make carbon important factor in policies. Combine tools from A-D.



mechanism: one

ersion-free, and

els, government and

e in volume and...



Collaborative
Soy
Initiative

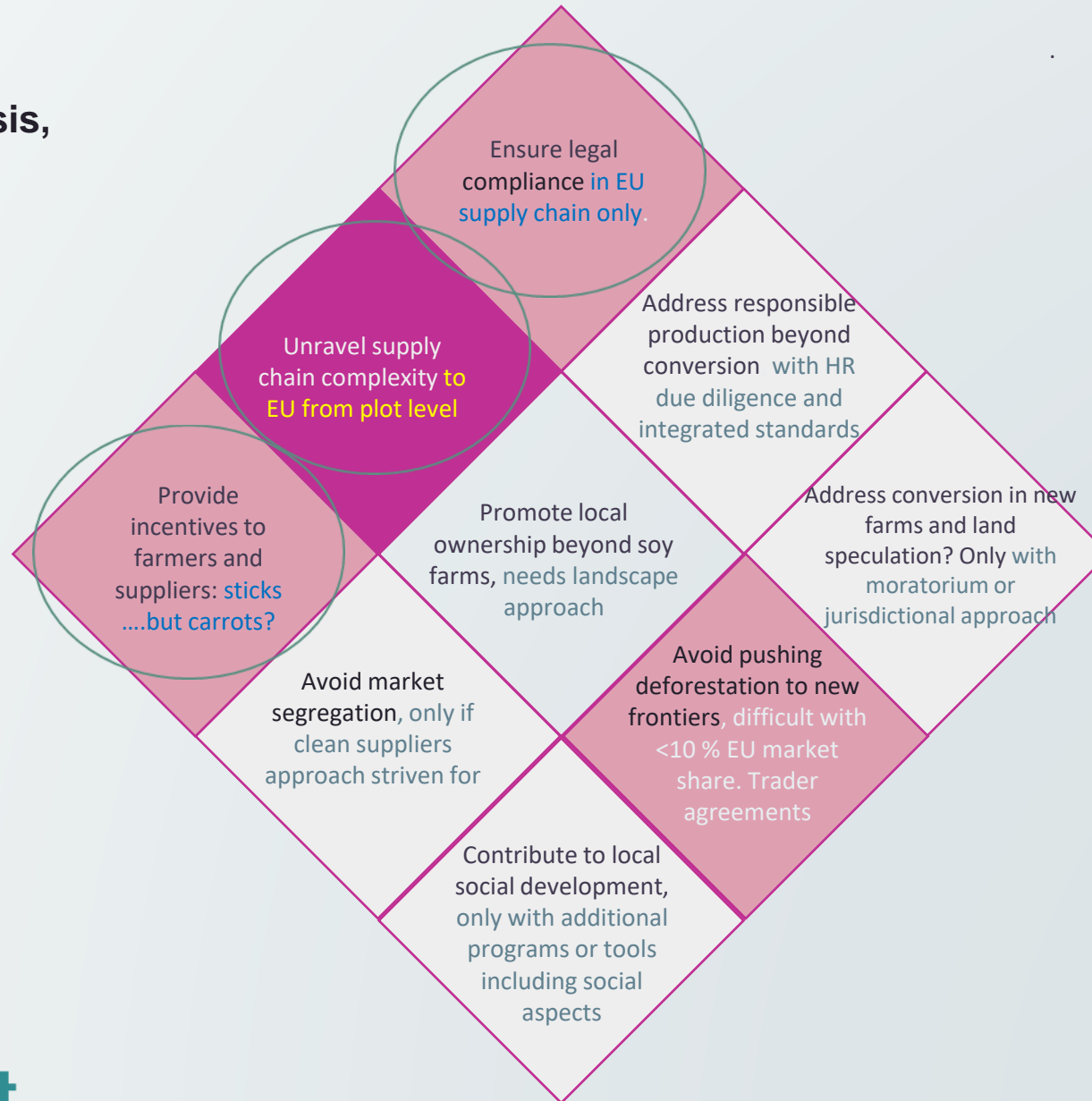
proforest

EU draft Regulation on Deforestation-free products

Magicube, dialogue tool

Potential output of gap analysis,

Disclaimer: Just a quick scan



- ◆ Capable of delivering
- ◆ Potentially capable of delivering
- ◇ Not capable of delivering



About ENSI



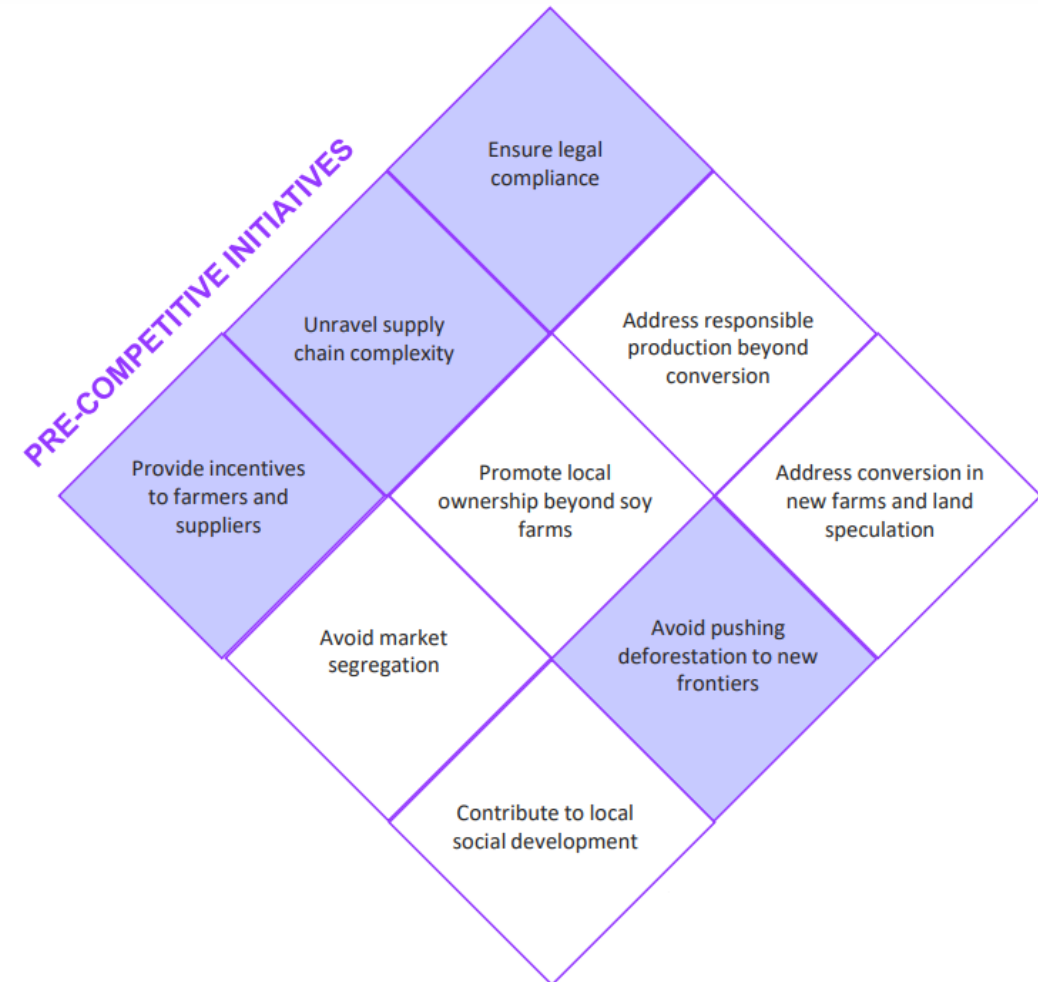
An open & informal platform by and for National Soya Initiatives

Shared mission:

“100% of our (countries’) soya consumption is produced according to the law and in a way that protects forests and valuable native vegetation (deforestation and conversion free)”

Cooperation in ENSI is meant to:

- Create increased synergy and impact by working together.
- Send a uniform signal to the market.
- Support greater market uptake and demand for legal, deforestation/conversion free soya production, connecting to the overall EU ambition to combat climate change and deforestation.
- Increase support for farmers committed to these practices.



ENSI Activities



- Exchange between NSIs about tools, methods and projects.
- Exchange with third parties.
- Monitoring of European & International agenda.
- Dialogue with other multistakeholder initiatives.
- Joint action.

State of affairs EU Regulation



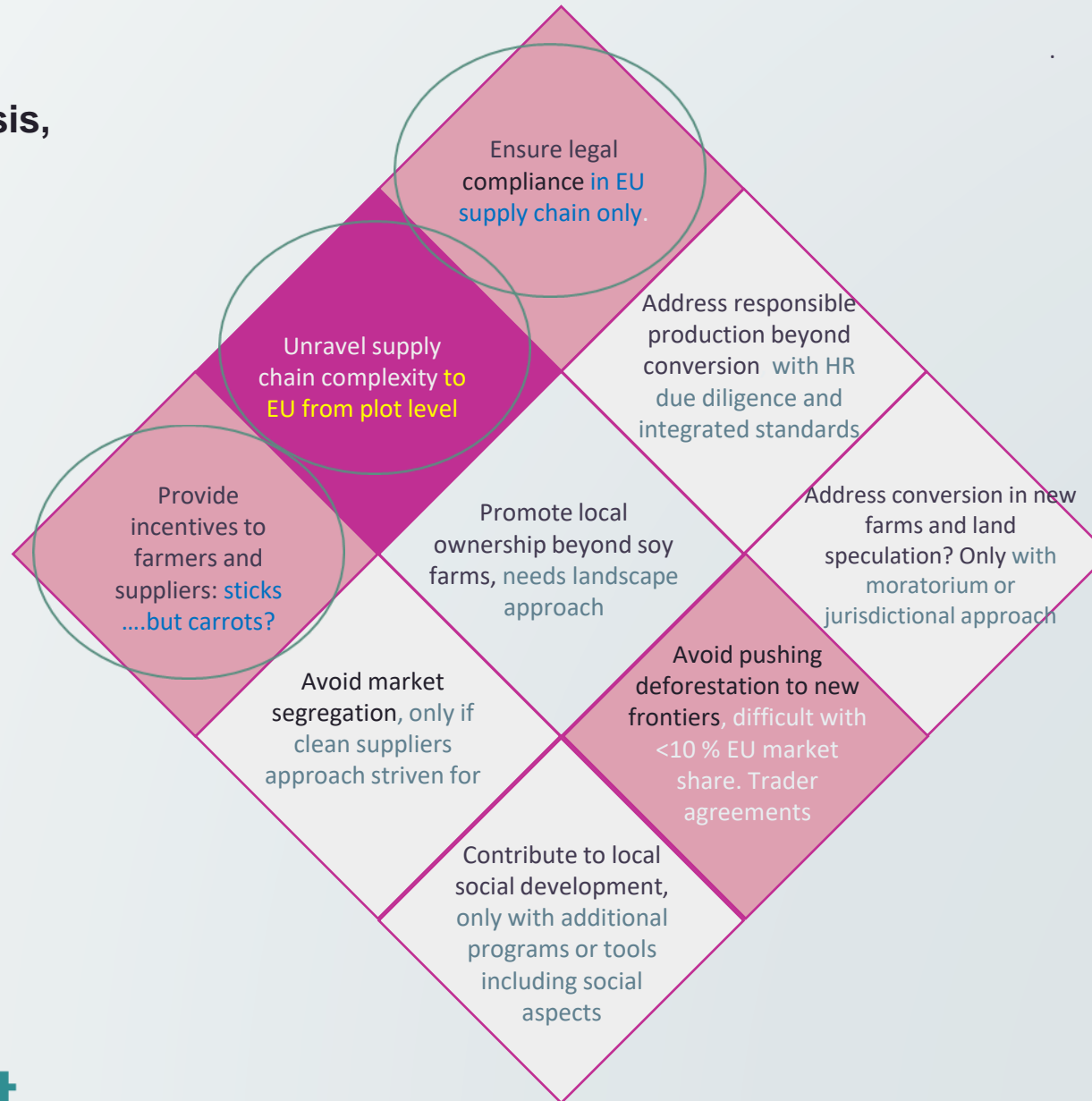
Julius Seinen and Peter de Koning-
Amsterdam Declaration Partnership

EU draft Regulation on Deforestation-free products

Magicube, dialogue tool

Potential output of gap analysis,

Disclaimer: Just a quick scan



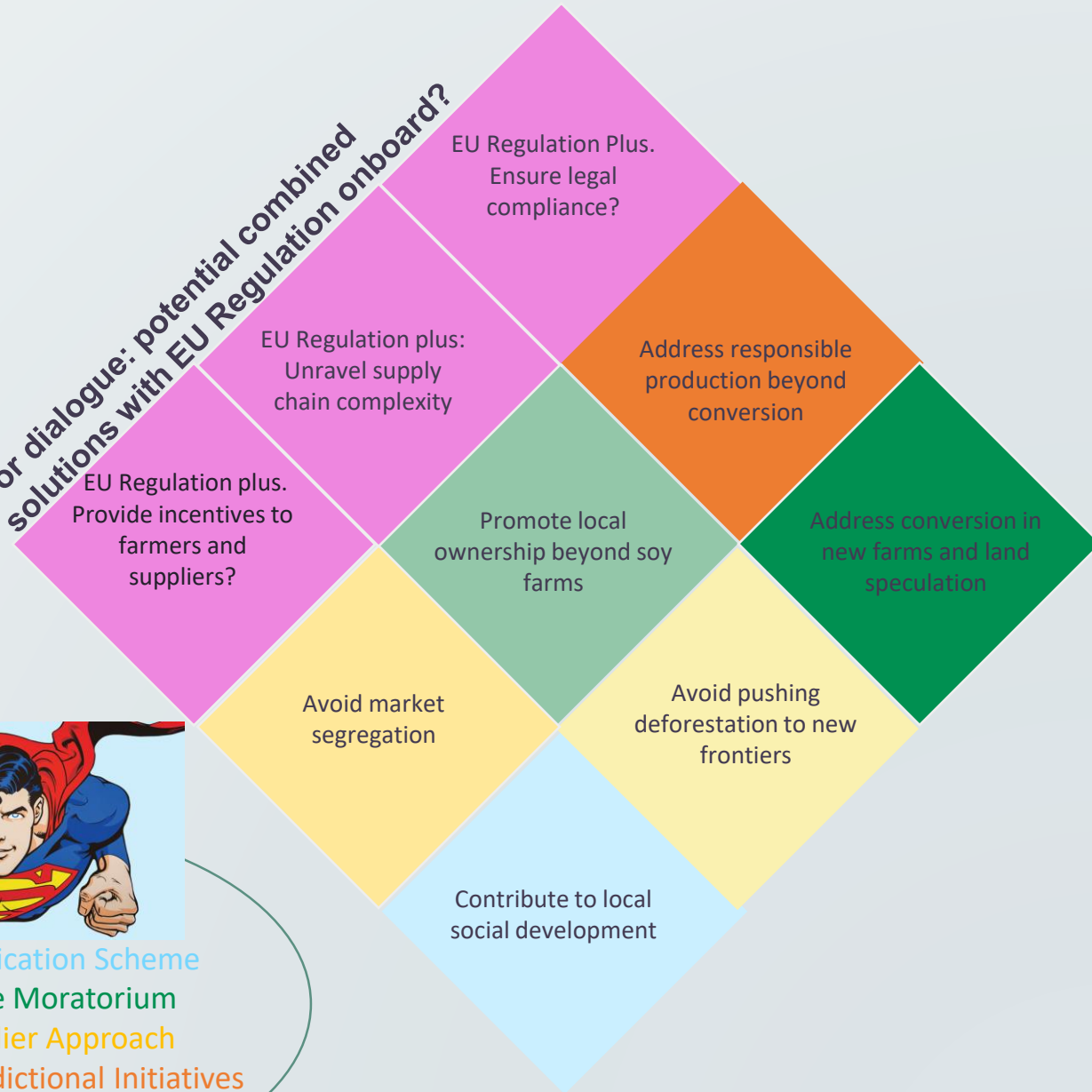
- ◆ Capable of delivering
- ◆ Potentially capable of delivering
- ◇ Not capable of delivering




Example One of a combined solution



For dialogue: potential combined solutions with EU Regulation onboard?



- ❖ Robust Certification Scheme
- ❖ Biome-wide Moratorium
- ❖ Clean Supplier Approach
- ❖ Landscape/Jurisdictional Initiatives



**Website: check info hub, information
webinars or narrative & magicube:**

<https://thecollaborativesoyinitiative.info>

Next webinar

Thursday November 10th, 14:30-16:00 CET

**Between Chaco and Pampa. Supporting sustainable soy in
Argentina.**

Save the date: Feb 2: What's next part II: implementation.



Collaborative Soy Initiative

<https://thecollaborativesoyinitiative.info>

contact:

coordinator@thecollaborativesoyinitiative.info