

# Dealing with conversion risk landscapes: asks and incentives

*Practical examples of how  
IDH is working in these  
areas*

META Meeting, March 18th

# IDH Landscape Approach

## Intervention Logic



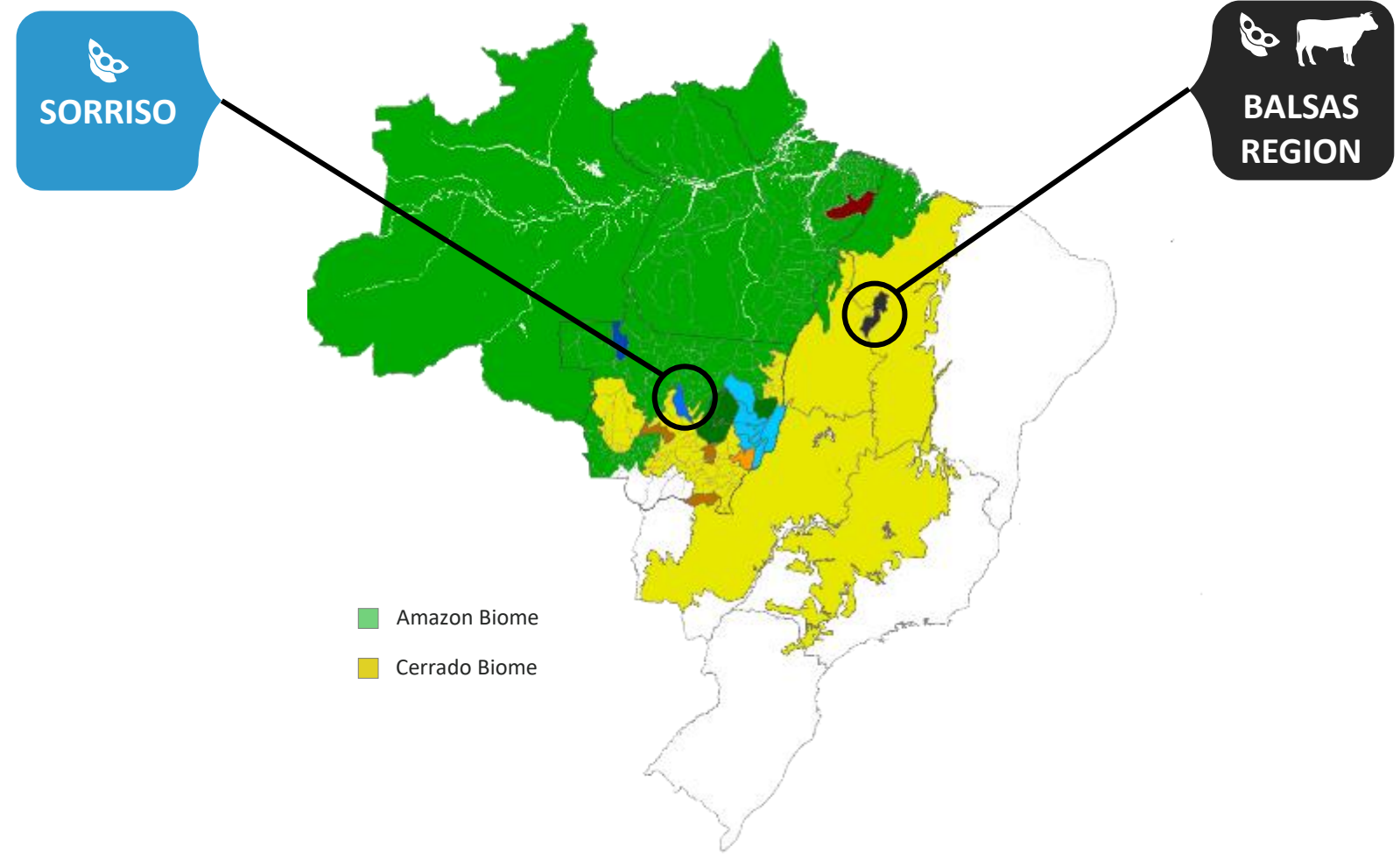
- Local multi-stakeholder coalitions (Compact)
- Collective vision for the territory
- SMART targets, governance, M&E, Investments
- Shared territory governance
- Business cases for investment of private and public sector

- Committed end buyers
- Public & Private investments
- Support the deliverables of the goals set by the territory
- Engage with sensitive territories

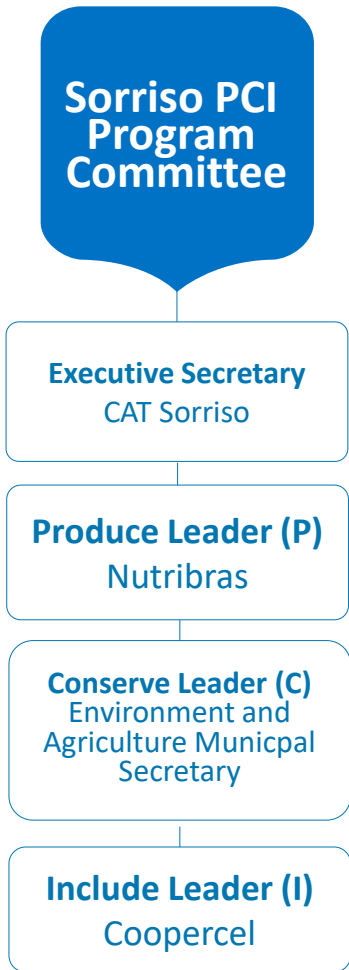


# Compacts in the Cerrado Region

Sorriso and Balsas Region



# Sorriso Compact



- **Increase RTRS production area to 150.000 ha by 2024**
- Increase corn ethanol production
- Increase solar energy up to 10 MWh by 2024
- Increase planted forests to 50.000 ha by 2024
- Increase poultry and chicken meat production
- Increase pig production by 40% by 2024
- Increase fish production by 100% by 2024



- **Eliminate illegal deforestation by 2024**
- Qualify 100% of the CAR for validation of the SEMA-MT until 2019
- Register 100% of rural properties in SIMCAR by 2019
- **Recover 100% degraded APP by 2024 (2.223 ha)**
- Support the fish production chain in the processes of environmental licensing and regularization.



- **Increase technical assistance in family agriculture to 290 families by 2024**
- **Regularize 100% of family farming plots by 2024**
- Increase milk production by 50% by 2024
- Increase honey production by 50% by 2024
- Increase fruit production by 100% 2024
- Increase horticultural production 50% by 2024



**CAT/IDH – RESPONSIBLE SOY / SMALLHOLDERS**

**CAT/REM – FEFAC COMPLIANCE SOY**

## Partners (17 signatories)

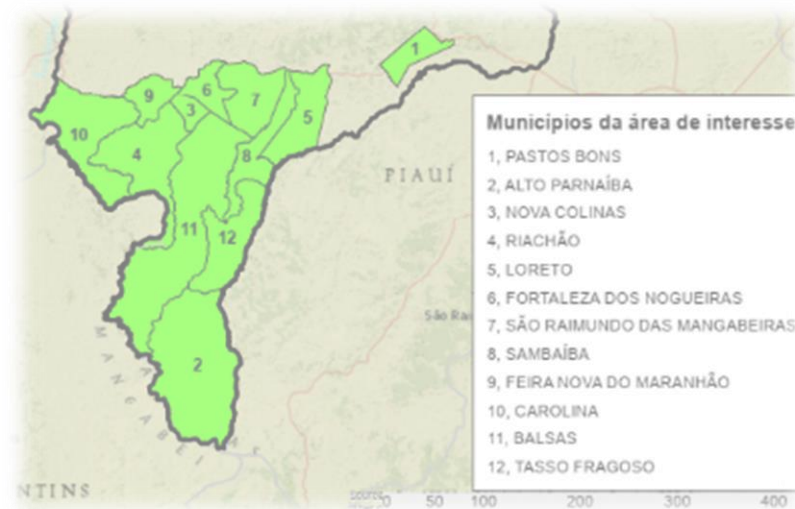


# Balsas Region Compact

Post compact agenda:  
 - Governance  
 - M&E Framework  
 - Investment pipeline



- Increase cotton production area to 50.000 ha by 2025
- Increase the diversification of crops adapted to the Balsas region by up to 25% of different species, by 2025
- **Increase the Crop/Forest/Livestock integration**
- Support 100% of the National No-tillage association in Balsas region
- **Increase the area of RTRS certified soy, Soja Plus and other quality standards in the Balsas region by up to 30%, by 2025**
- **Eliminate illegal deforestation by 2025**
- **Register 100% of rural properties in the CAR system by 2025**
- **Validate 100% of the CAR's in Balsas by 2025**
- Support the fish production chain in the processes of environmental licensing and regularization.
- **Support actions that promote PES in the Balsas region, reaching 2 projects implemented by 2025**
- **Increase technical assistance in family agriculture in 50% by 2025**
- **Regularize 40% of family farming plots**
- Increase Cowpea beans production by 50% by 2025, supporting the structuring of the value chain;
- **Increase rice production by 30% by 2025, supporting the structuring of the value chain;**
- Increase cassava production by 60% by 2025, supporting the structuring of the value chain;

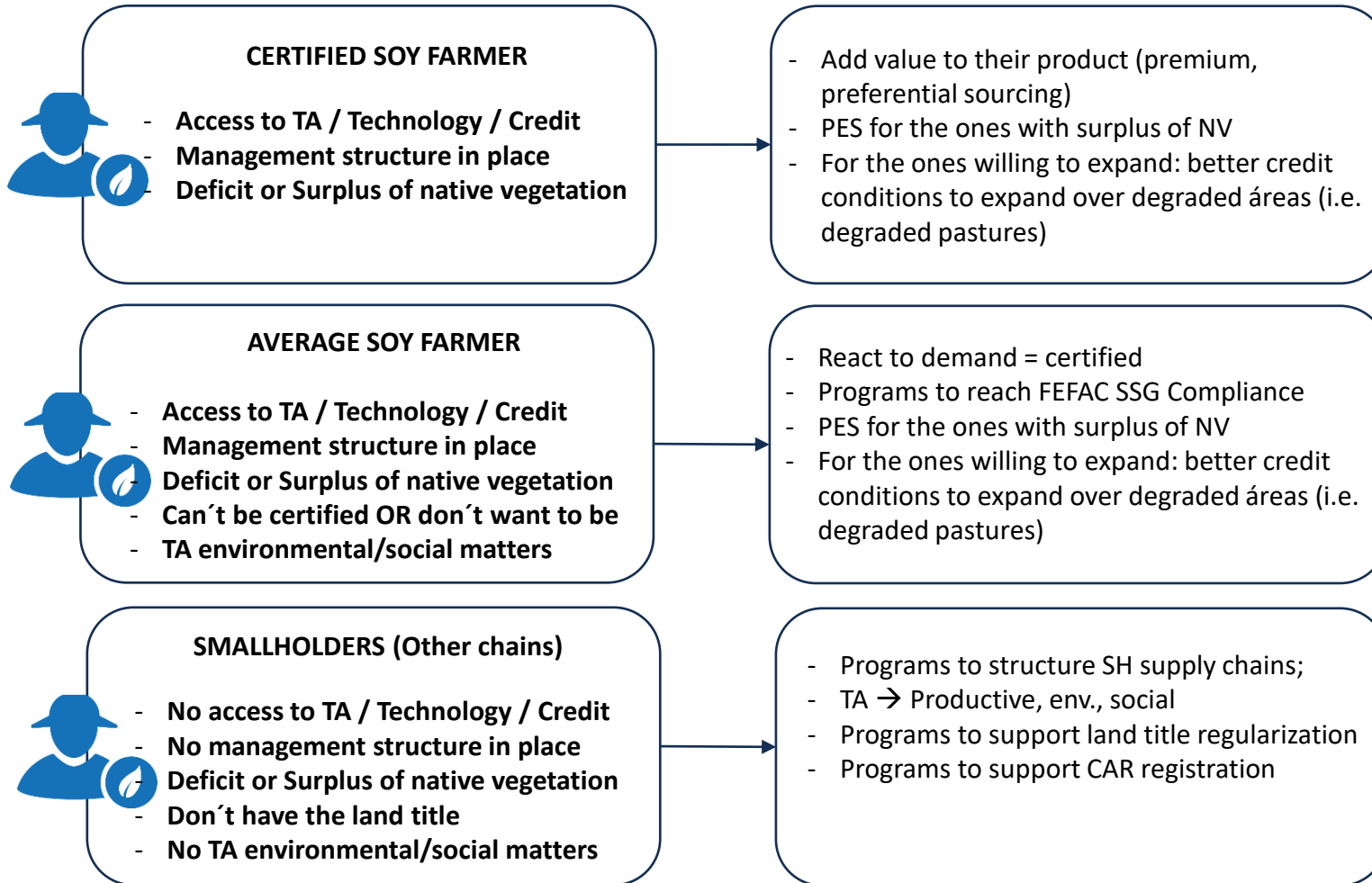


## Partners (21 signatories)



# FARMERS IN THESE REGIONS

## INCENTIVES



**SUPPLY CHAIN ACTION**  
+  
**LANDSCAPE APPROACH**