



Collaborative Soy Initiative

Mini webinar: interviewing Nutreco's Jose Villalon about soy purchasing policy, supplier engagement and incentives.

June 17 th 2021

The Nutreco Soy & Oil Palm sourcing policy creates clarity for purchasing managers to realize the clear milestones set out in the Nutreco sustainability Roadmap 2025



Why this policy?

The major sustainability issue in vegetable ingredients is deforestation, driven by land use change for the production of soy and oil palm

Many certification schemes are available that vary in assurances and applicability

For purchasing managers it is hard to understand what is 'the right thing to do'

The sourcing policy should make that clear and drive the deforestation free target for 2025 of Nutreco from the NELT approved sustainability roadmap 2025

What is the policy about? Our derived soy and oil palm sourcing hierarchy:

Class A : Low deforestation risk countries or high risk countries with top certification and fully segregated material

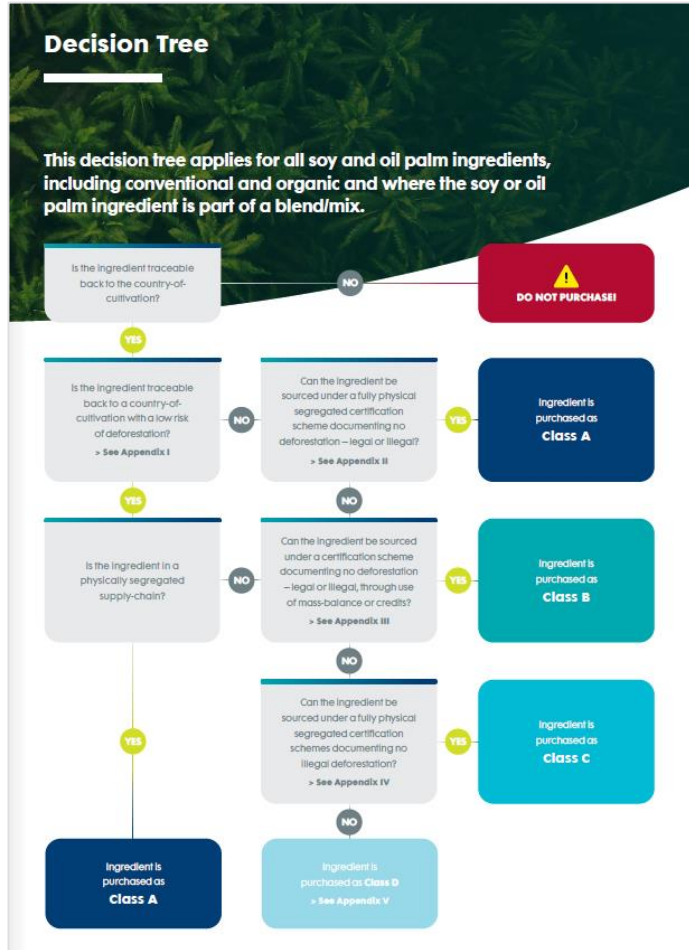
Class B: High risk countries with top certification and mass balance or credits

Class C: High risk countries with certification banning illegal deforestation

Class D: All other soy and oil palm ingredients

100% of purchase should be Class A by December 2025

The decision tree in the policy (page 7) should make it easy to identify, with every soy or oil palm purchase made, what product class is being bought



How do I use this policy?

The policy has several appendixes with tables indicating what countries are high risk and low risk and which certification belongs to which product class (all these lists are validated by FEFAC or Blonk Consultants so they are not a Nutreco standard)

With every planned purchase the tree can be followed to identify in which class the product belongs

How to take action?

1. Know where your soy and oil palm is cultivated
2. In case it comes from a high risk country, check with your supplier what actions they take
3. When high risk and no appropriate certification; check for alternatives (low risk countries, material with certification, other suppliers, etc.)
4. Define the strategy, discuss with your GM and commercial and marketing team whether there is something to gain with being early and explore opportunities to set an earlier milestone

Links for further info:

Sustainability Report <https://www.nutreco.com/en/sustainability/sustainability-report-library/sustainability-report-2020/>

RoadMap 2025 <https://www.nutreco.com/en/sustainability/sustainability-roadmap-2025/>

Procurement policy <https://www.skretting.com/globalassets/shared-documents/sustainability/201203-nutreco-soy-and-oil-palm-ingredients-sourcing-policy.pdf?v=4af3f1>





Collaborative Soy Initiative

jose.villalon@nutreco.com

or Heleen van den Hombergh:

coordinator@thecollaborativesoyinitiative.info