

Implementation of EU Regulation for Soy, how and what else?

Impact in production regions

CSI-ENSI-ADP WEBINAR

DANIELA MARIUZZO, IDH

FEBRUARY 23, 2023

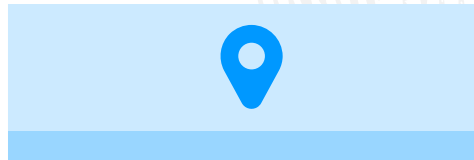
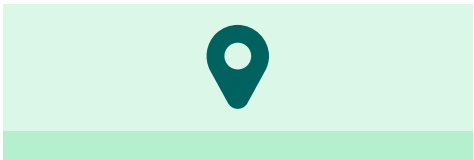
Landscapes Strategy



- Aquicultura
- Carne bovina / Pecuária
- Caju
- Mandioca
- Cacaú
- Café
- Milho
- Algodão
- Laticínios
- Floricultura
- Frutas e Vegetais Frescos.
- Horticultura
- Óleo de Palma
- Pimenta
- Papel e Celulose
- Arroz
- Borracha
- Soja
- Especiarias: Pimenta do Reino e Açafrão
- Chá
- Madeira
- Viticultura

Landscapes in Brazil

Mato Grosso | Pará | Maranhão | Matopiba | Semi-arid



- Sorriso-MT PCI Compact

- Juruena-MT Valley PCI Compact

- Barra dos Garças – MT PCI Compact

- Balsas Region - MA PCI Compact

- Semi-arid Sustainable Territories Program

- Mato Grosso PCI

- Pará GGP

- Cultivating Sustainable Life Program - Sorriso

- Calves Program Juruena Valley

- Milk Program Juruena Valley

- Calves Program Pantanal

- Calves Program Araguaia Valley

- HUB Cotriguaçu

- HUB Juruena

- HUB Sorriso

- HUB Barra do Garças

- HUB Balsas Region

- Amazon Biome
- Cerrado Biome
- Pantanal Biome
- Caatinga

5 Elements Landscapes Strategy



PPI – Green Growth Plan

Long term governance



PPI Compacts & Co-funds

TA Models

SourceUp[®]

VSA Verified Sourcing Areas

Public committed companies



Financial Solutions for landscapes
SCALING UP MODELS TO REGIONS



Support public policies agenda

TA Models

PCI State Strategy Goals 2030

Selected Targets



Produce

- Recover 2.5 million ha of low productivity pastures
- Increase livestock productivity from 50 to 116 kg/ha/year. by 2030
- Expand the grain area in degraded pasture areas from 9.5 to 14.69 million ha by 2030
- Expand the area under sustainable forest management from 2.8 to 6 million ha by 2030



Conserve

- Eliminate illegal deforestation (by 2030) & keep 60% native vegetation
- Reduce deforestation by 90% in Amazon and by 95% in Cerrado by 2030
- Recompose 1M ha riparian area and 1.9M ha legal reserve
- Register and validate 90% of CARs by 2024



Include

- 100% adherence of municipalities to the SEIAF system by 2030
- Increase the Gross Value of Production of family farming from 1.2 billion to R\$ 2.0 billion by 2030
- Increase access to Pronaf credit from BRL 882 million to BRL 1.3 billion/year by 2030
- Land regularization in 70% of lots by 2030

Landscapes Strategy

Exit Strategy PCI MT & PCI Compacts

Between 2016 and 2020,
public and private
investments summed over



US\$ 3,2 billion

P

Us\$ 1,82 bi

C

Us\$ 66,5 mi

I

Us\$ 1,32 bi

Estimated total
investment required
between 2021-2030 is



US\$ 41 billion



<https://pcimt.org/index.php>





PCI COMPACTS

[Página inicial - IDH - Iniciativa para o comércio sustentável \(idhlatam.com\)](http://idhlatam.com)



PPI Compacts Approach Methodology



Sorriso PCI Compact Targets 2019



Produce

- **Increase, by 2024:**
 - The corn ethanol production and of its by-products
 - By up to 10MWn solar energy
 - By up to 150k soybean production under RTRS
 - By up to 50k hectares the area of planted forests
 - The chicken meat production
 - By 40% pig production
 - By 100% fish production



Conserve

- Eliminate illegal deforestation by 2024
- Qualify 100% of the CAR for further validation of the SEMA-MT until 2019
- Register 100% of rural properties in SIMCAR by 2019
- Recover 100% degraded APP by 2024
- Support the fish production chain in the processes of environmental licensing and regularization



Include

- **Increase, by 2024:**
 - The ATER in family agriculture to 290 families
 - By 50% milk production
 - By 50% honey production
 - By 100% fruit production
 - By 50% horticultural production
- Regularize 100% of family farming plots

Sorriso PCI Compact Signatories

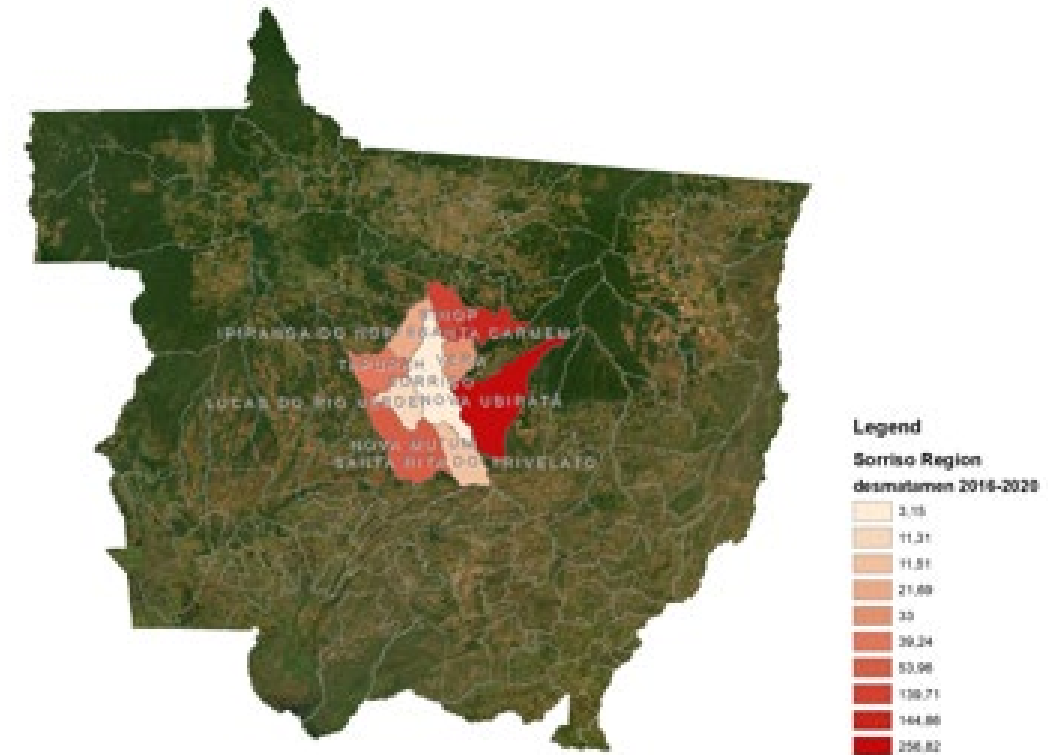
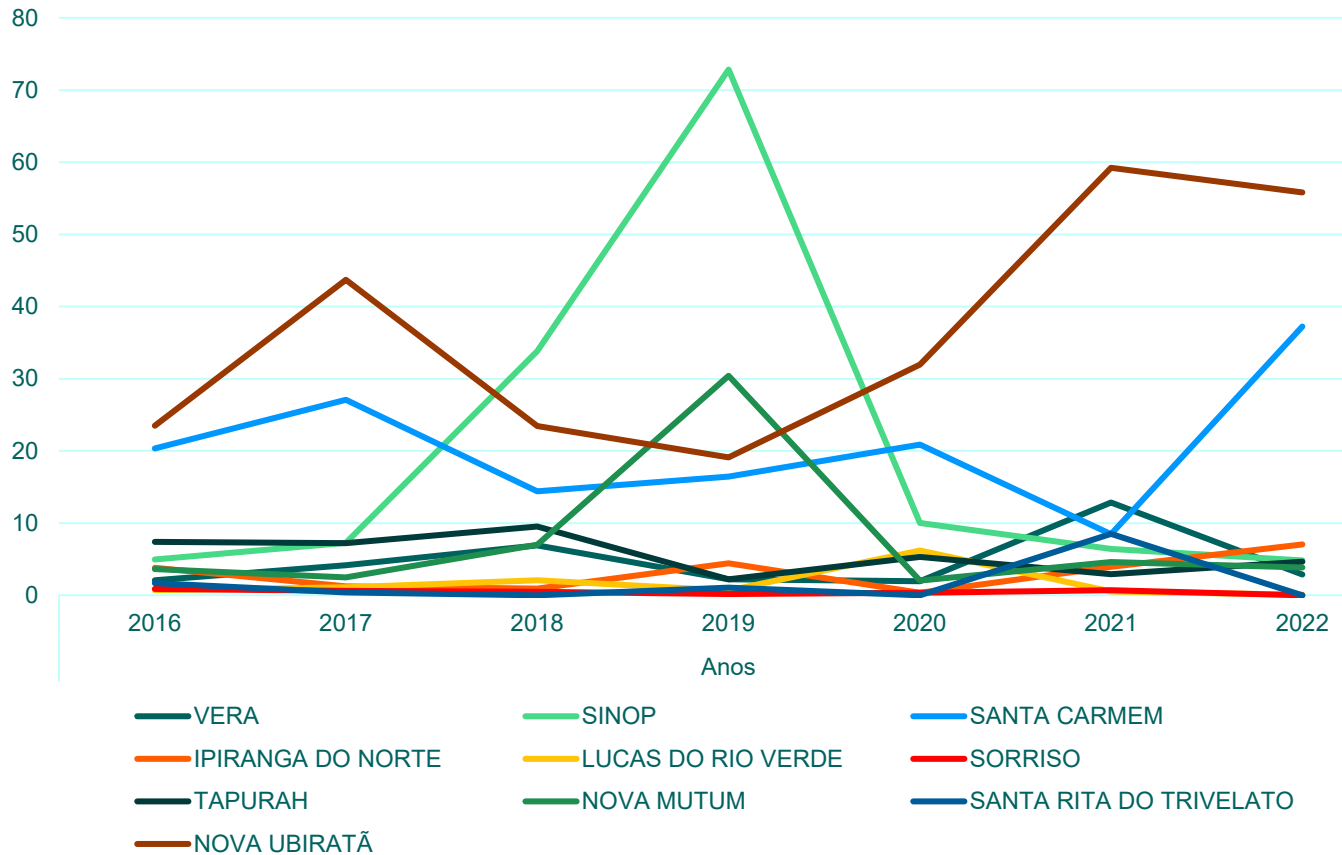


Sorriso

Sorriso PCI Compact

Sorriso Region - Deforestation (Km2) 2016-2022



Balsas Region PCI Compact 2020 Maranhão State



Produce

- **Increase, by 2025:**
 - By 50k hectares of cotton production
 - By up to 30% the area of RTRS certified soy, AgriPlus and other quality standards
 - 25% diversification of adapted crops and up to 25% of different species
 - By up to 20% animal genetics and fodder in the production areas with a system (ILP / ILPF)
- Support 100% of the actions of the National Federation of No-Tillage, through soil conservationist practices



Conserve

- **Support actions that promote, by 2025:**
 - By 100% reduction of illegal deforestation
 - By 50% reduction of fires
 - The Payment for Environmental, reaching 2 projects implemented
 - The development and enhancement of ecological tourism in the Chapada das Mesas, supporting cities, communities, archaeological sites and rural properties
- Register up to 100% of rural properties at SICAR in the Balsas Region, by 2025
- Validate up to 100% of the CAR in the Balsas region, by 2025
- Encourage correct disposal of up to 100% of waste in the Balsas region, by 2025



Include

- **Increase and support the structuring of the value chain, by 2025:**
 - By 50% The number of families served by ATER (technical assistance & rural extension)
 - By 60% cassava production
 - By 50% cowpea production
 - By 30% rice production
 - By 40% corn cultivar
 - By 20% Cerrado fruits and species introduced
 - By 40% the sheep / goat production
- Promote Land Regularization in up to 40% of the Family Farming lots
- Support 100% of the actions to increase the production of milk and dairy products in order to strengthen the region's cooperative system
- Create 01 program to promote the inclusion of women, traditional peoples and communities in activities related to crafts and other regional development



Balsas Region PCI Compact 2020 Maranhão State

MA



Regional Compact

Public sector (state and local governments), private sector, civil society, producers



12

Municipalities

36

Signatories

Região de Balsas





**SUPPORT ON PUBLIC
POLICIES AGENDA:
OPPORTUNITIES FOR
PRIVATE SECTOR
ENGAGEMENT ON
INCLUSION AGENDA**

**CAR (Environmental Register)
Land Regularization**

Environmental and Land Regularization in MT

Development of Technical Assistance Models

Assistance to farmers
4 HUBs (*Farmers Support Centres*)
installed in the municipalities with a PCI Regional Compact

Land Regularization
250 families
benefited with georeferencing in the Amanhecer Valley settlement in Juruena-MT

CAR implementation
3 MILLION+ mapped hectares for CAR

Technical cooperation with Sema-MT
10 TECHNICIANS supporting the PRA

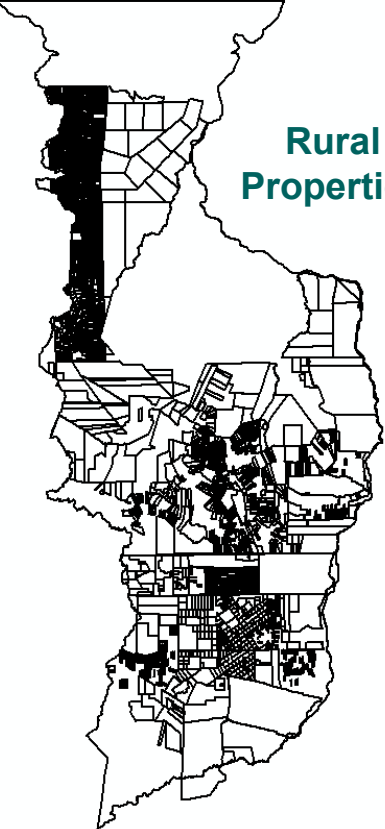
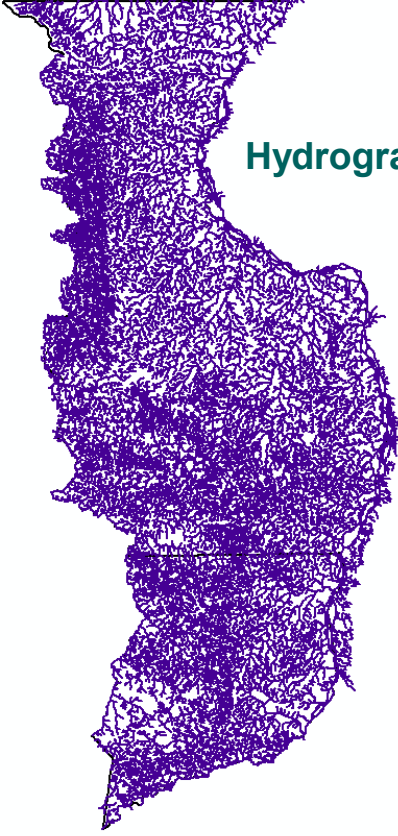
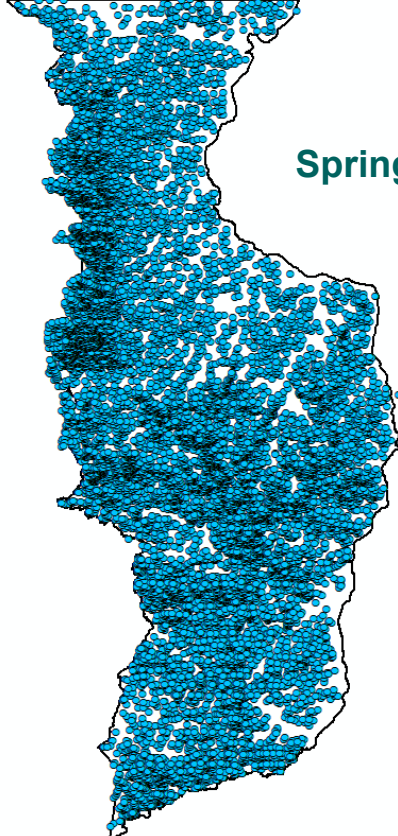
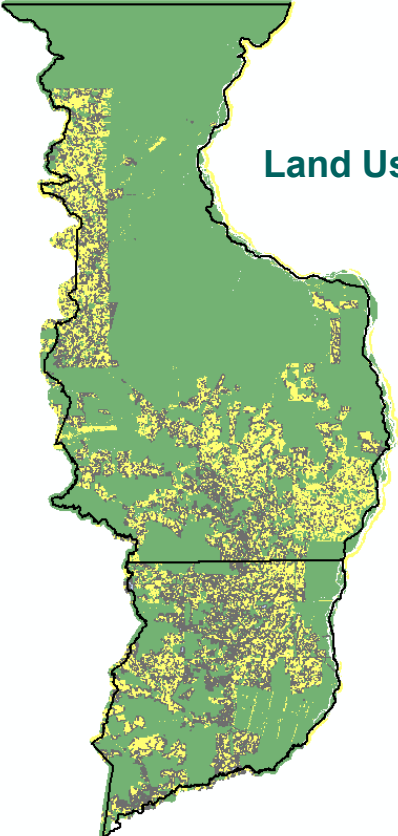
4 DATA-BASES
delivered to municipalities with PCI Regional Compacts

3.400 + analysis carried out in 2 years



Environmental Regularization

Mapping for the CAR



Environmental Regularization HUBs



Public Policies Implementation

Municipal Programs
(Land and environmental regularisation)

Actions

Municipal

State
National

CAP
Centro de Apoio ao Produtor



PRODUTOR,
agora você encontra
o apoio que precisa
em um único lugar.

O CENTRO DE APOIO
AO PRODUTOR – CAP
é um local para ajudar você com
orientações técnicas, tirar
dúvidas sobre regularização
ambiental e fundiária, e informar
sobre os projetos disponíveis
para a sua região.



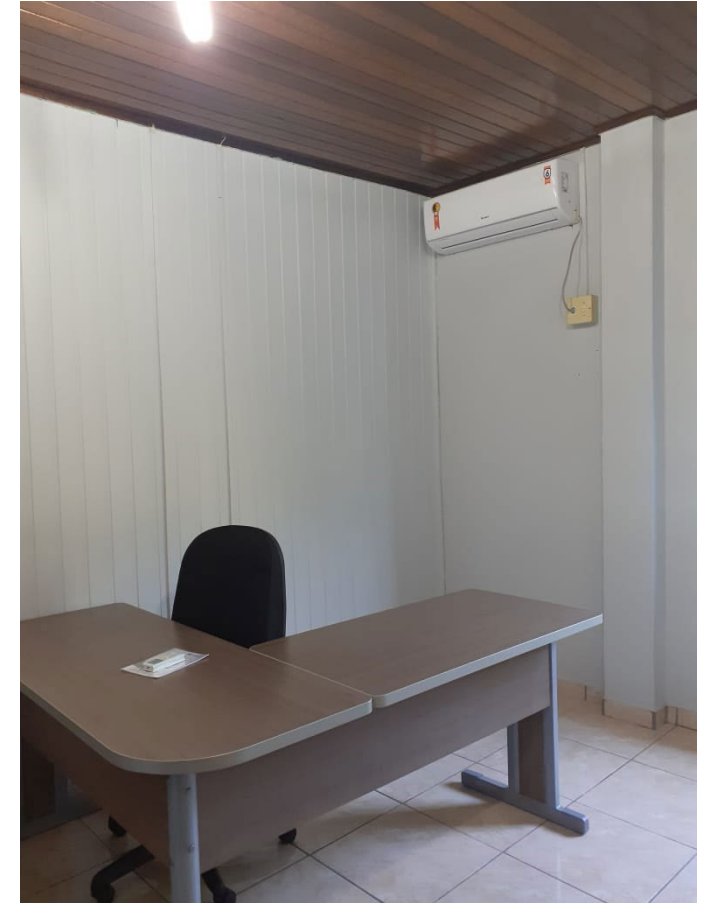
APROVEITE E VENHA
CONHECER O CENTRO,
QUEM TEM INFORMAÇÃO
PRODUZ MAIS E
MELHOR.

ATENDIMENTO:
SEGUNDA A SEXTA
8H ÀS 12H E 14H ÀS 18H

CAP JURUENA
AV. D4 DE JULHO, BAIRRO VILA NOVA, S/N
ANEXO A SEC. DE AGRICULTURA E A EMPAER.



SourceUp®



Land title Regularization



Public Policies Implementation

Municipal Programs
(Land and environmental regularisation)

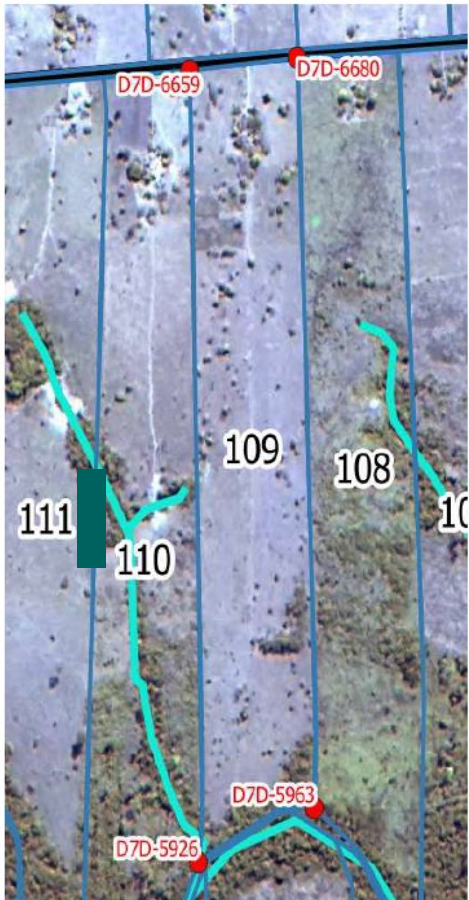
Actions

Municipal

State National



Land title Regularization Vale do Amanhecer





idh
transforming markets

THANK YOU

DANIELA MARIUZZO
mariuzzo@idhtrade.org

 Schweizerische Eidgenossenschaft
Confédération suisse
Confederazione Svizzera
Confederaziun svizra
Swiss Confederation
Federal Department of Economic Affairs,
Education and Research SAJE
State Secretariat for Economic Affairs SECO



Ministry of Foreign Affairs

DANIDA



NICFI Norway's
International Climate
and Forest Initiative