



Accountability
Framework

Delivering on
ethical supply chain
commitments

CSI Platform META meeting

Overview of the Accountability Framework

November 19, 2020



Federal Ministry
for Economic Cooperation
and Development

GORDON AND BETTY
MOORE
FOUNDATION



NICFI
Norway's International Climate and Forest Initiative



Schweizerische Eidgenossenschaft
Confédération suisse
Confederazione Svizzera
Confederaziun svizra

Swiss Confederation

Federal Department of Economic Affairs,
Education and Research EAER
State Secretariat for Economic Affairs SECO



ukaid
from the British people



Outline

- 1 About the Accountability Framework initiative (AFi)
- 2 Using the Framework to drive progress
- 3 Getting started with the Framework
- 4 Questions and answers



1

About the Accountability Framework initiative (AFi)



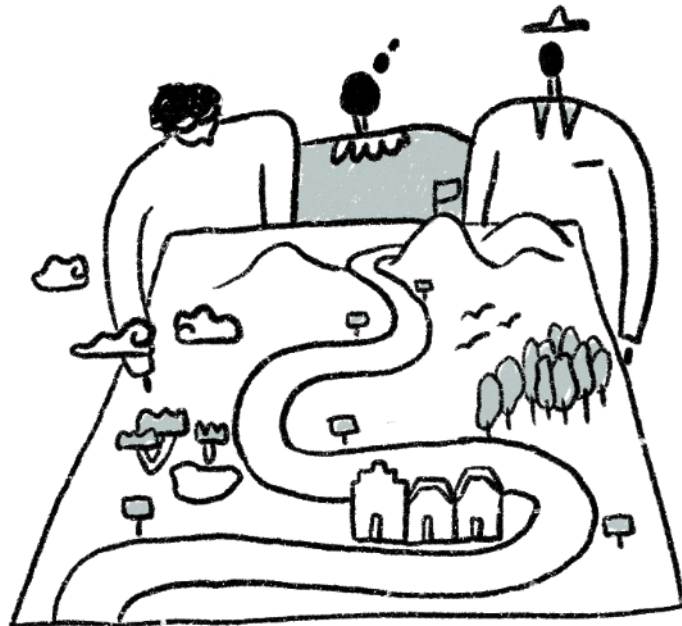


Accountability Framework

Delivering on
ethical supply chain
commitments

*A collaborative effort to accelerate progress and improve accountability
for ethical supply chains in agriculture and forestry*

The Framework:
A common roadmap



The AFi Coalition





A unique coalition to support progress at scale

Steering Group:



Backbone Team:



Supporting Partners:



Regional Teams:

SE Asia; West & Central Africa; Colombia; Brazil/Paraguay/Argentina

Consensus

Capacity

Coordination



Scope of the Accountability Framework

Topical scope



Halt deforestation



Protect other natural ecosystems



Respect human rights



Support producer and community livelihoods

Supply Chains

Palm Oil

Soy

Cattle

Pulp/paper/timber

Cocoa

Rubber

Other commodities
(coffee, etc.)

Geographies

South America

Southeast Asia

West/Central Africa

Other producing regions



Contents of the Accountability Framework

Set and strengthen goals

Implement ethical supply chains

Report progress

1



Protection of forests and other natural ecosystems

2



Respect for human rights

3



Specification of commitments

4



Company systems and processes to drive effective implementation

5



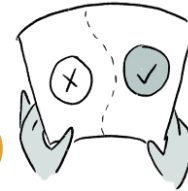
Supply chain assessment and traceability

6



Managing for supply chain compliance

7



Land acquisition, land use planning, and site development

8



Land management and long-term protection

9



Access to remedy and environmental restoration

10



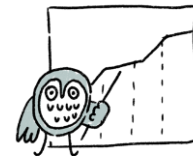
Collaboration for landscape and sectoral sustainability

11



Monitoring and verification

12



Reporting, disclosure, and claims



Accountability Framework guidance for soy (& beef) in South America

- The Accountability Framework is fully aligned with – and will be incorporating – additional specific guidance for soy production and sourcing from the Amazon, Cerrado, and Chaco biomes.
- This material was developed through the Collaboration for Forests and Agriculture and includes specific definitions and guidance on monitoring systems.





2

Using the Framework to drive progress





How is the Accountability Framework helping companies progress on ethical supply chains?

- ✓ Providing **clear expectations and best practices** on what companies need to include in policy-setting, implementation and reporting practices for non-certified supply.
- ✓ Clarification on what **metrics** to measure and report on, for companies and investors alike.
- ✓ Fostering greater consistency between **reporting platforms, scorecards and data tools** to avoid confusion.
- ✓ Guidance on how to incorporate **human rights** – including workers' rights – into supply chain efforts around forest and conversion-risk commodities.
- ✓ Supporting alignment of **policies and regulations** governing production and trade of forest and conversion-risk commodities.



Company experiences:

“The Accountability Framework can help everyone to **speak the same language**, making it faster and easier for all of us to deliver on commitments.

Michel Santos

Director, Global Sustainability
Bunge



“As companies, **we all want rules of the game**. We all want to know what we can report against transparently to demonstrate to stakeholders that we're really making these efforts in our supply chains. The Accountability Framework allows us to do that in a really clear and detailed way.

Rachael Sherman

Director Global Sustainability
McDonald's Corporation





Industry groups and sector initiatives supporting the AFi

AFi supports industry groups, associations and other sectoral initiatives to align their efforts with the best practices in the Accountability Framework. Some examples include:

- Consumer Goods Forum – aligning commodity roadmaps with the Framework
- UK Roundtable on Sustainable Soya – providing common definitions to guide members on policy development
- Aquaculture Stewardship Council – new fish feed standard aligns with the Framework for requirements on plant-based ingredients
- FEFAC – coordinating with AFi to pursue alignment for the upcoming new Soy Sourcing Guidelines



Examples of aligned initiatives

Responsible investment



Certification



Other implementation protocols



Reporting, monitoring and assessment



Industry and sectoral initiatives





3

Tools and resources to get started with the Framework



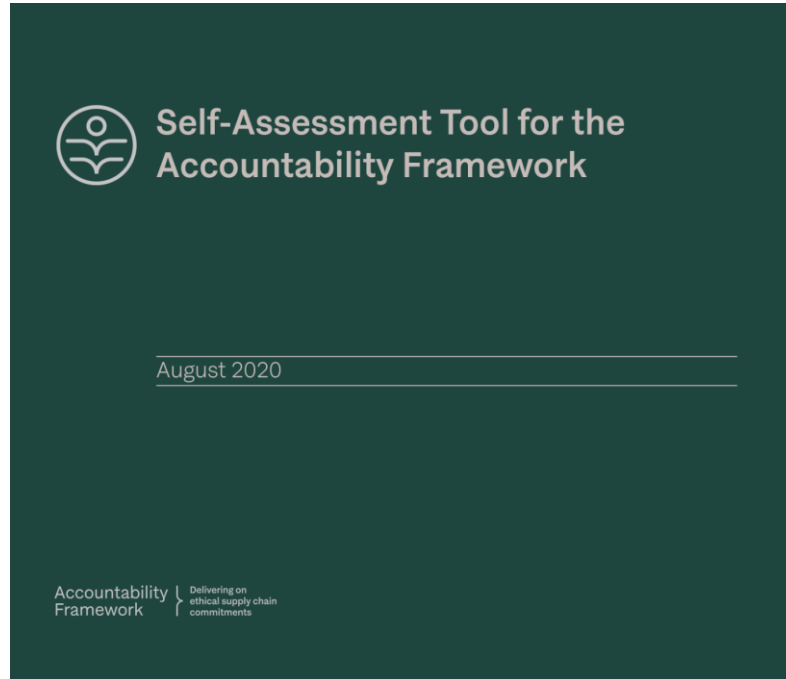


What tools and resources are available for companies?

- ✓ The [AFi self-assessment tool](#) helps companies to benchmark policies, implementation systems, and reporting against the global best practice and NGO expectations in the Framework.
- ✓ The AFi's guide on [How to write a strong ethical supply chain policy](#) supports development robust policies by companies.
- ✓ Resources and guidance to understand how to manage [supplier non-compliance](#) and credible options for addressing [traceability](#).
- ✓ Guidance on best practices in [monitoring](#), [disclosure](#) and [reporting](#) that is aligned with sustainability reporting and/or scoring frameworks.



AFi Self-Assessment Tool



1. Tool for Assessing Company Commitments and Policies

The Accountability Framework's Core Principles 1-3 define the elements of strong company policies to address deforestation, conversion of other natural ecosystems, and human rights abuses in agricultural and forestry supply chains. This section itemizes the elements of these Core Principles to help companies assess the alignment of their policies with the Framework. It can also be used as a reference to guide the establishment of new policies. Assessment should follow the three steps below:

Step 1: Define the assessment scope

To ensure clarity in how the assessment is conducted and interpreted, the assessment scope should be clearly defined at the outset. It is helpful to specify both the scope of any existing company commitments/policies and the scope of the assessment, if different.¹ All elements in the assessment should then be evaluated with respect to the assessment scope specified here.

Aspect of scope	Scope of company commitment(s)	Scope of this assessment
Commodities included	<input type="checkbox"/>	<input type="checkbox"/>
Company activities included (e.g., production, sourcing, and/or financing – state “all” or specify which are covered vs. excluded)	<input type="checkbox"/>	<input type="checkbox"/>
Locations of production, sourcing, or financing included (e.g., countries of origin – state “all” or specify which are covered vs. excluded)	<input type="checkbox"/>	<input type="checkbox"/>
Types of suppliers included (e.g., own production, direct suppliers, indirect suppliers, smallholder suppliers – state “all” or specify which are covered vs. excluded)	<input type="checkbox"/>	<input type="checkbox"/>
Business units or affiliates (state “all” or specify which are covered vs. excluded)	<input type="checkbox"/>	<input type="checkbox"/>
Please specify any other exclusions:	<input type="checkbox"/>	<input type="checkbox"/>



User guide: How to write a strong policy



How to write a strong ethical supply chain policy

September 2020

Annex 1: Sample company-wide “umbrella” policy

This annex provides a sample of a company-wide policy on deforestation, conversion, and human rights that aligns with the Accountability Framework and is based on the policy-setting process outlined in this guide. The sample policy itself is in the left column while the right column contains explanatory notes.

AmazingCompany’s Ethical Supply Chain Policy

Protection of forests and other natural ecosystems is critical for maintaining biodiversity, combating climate change, and sustaining livelihoods. The raw materials that AmazingCompany sources – including palm oil, soy, and cocoa – can pose risks for deforestation and human rights violations. As part of our overall sustainability goals, AmazingCompany is committed to eliminating deforestation and ecosystem conversion from our supply chains and to safeguarding human rights across all our operations and suppliers. This policy outlines our commitment to achieve ethical supply chains across all our production and sourcing.

This policy aligns with the principles and guidelines laid out in the UN Global Compact, the UN Guiding Principles for Business and Human Rights, the International Bill on Human Rights, and the ILO fundamental conventions. The policy also follows the Accountability Framework and incorporates many of its terms and definitions to help clarify the intentions of these commitments and promote alignment in sustainability practices across the sectors where we operate.

Scope

The provisions in this policy apply to:

- all commodities that AmazingCompany produces or sources that pose a material risk for deforestation, conversion, or human rights violations, namely palm oil, soy, and cocoa
- all AmazingCompany operations globally, including those of our subsidiaries, mills, and plantations we own or manage

This introduction frames the policy in its context according to Step 2.

This paragraph cites the key external norms that the policy aligns with or incorporates.

This section specifies the scope of the policy according to Step 3. Since AmazingCompany has also developed specific policies for each of its commodities and for workers’ rights, this



User guides: Essential components of reporting



Using Existing Reporting Systems to Report on Commitments

June 2019

Minor revision: December 2019

HOW TO

Use the Accountability Framework to guide reporting on agricultural and forestry supply chains

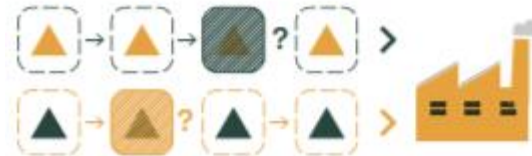
1. Company **exposure** to environmental and social risks.



2. **Management systems** and activities related to the implementation of commitments.



3. Degree of **traceability** and/or control in the company's supply chain.



4. **Performance relative to company commitments and targets**, including:

- a) progress towards or fulfilment of the commitment or target;
- b) associated on-the-ground outcomes for land use, deforestation/conversion, and human rights





Join the AFi webinar series!

Company Training and Learning Webinar Series

September 30th

Overview of the Accountability Framework

October 21st

Improve your company's sustainability ratings

November 17th

Reporting on forest-risk commodities

December 9th

Using the Framework in tandem with certification and other tools

January (date tba)

Responsible supply chain management



**Accountability
Framework**

FOR MORE INFORMATION VISIT:
[ACCOUNTABILITY-FRAMEWORK.ORG/EVENTS](https://www.accountability-framework.org/events)



Get Started

www.accountability-framework.org

Thank you and please reach out for more information!
astork@ra.org



Learn about the AFi and the Framework

[Learn More >](#)



See how the Framework is relevant to your organization

[Learn More >](#)



Apply the Framework

[Learn More >](#)



Access the full Framework

[Learn More >](#)



Learn about key topics addressed in the Framework

[Learn More >](#)



accountability-framework.org